

Client: Willmott Dixon Construction
Name: Flemingate MSCP, Beverley
Period: **October 2015**
Value: £472k
Location: Beverley
Works: Deck Waterproofing and Coloured Wearing Course, Structural Movement Joints and Lining



The Project

SL Construction Services were selected by **Willmott Dixon Construction** to install a protective Waterproofing and Anti-Skid system to the **Flemingate MSCP** in **Beverley**.

The long service life and ease of future maintenance of the products used by **SL Construction Services** will provide a cost effective solution, complete protection and will reduce the car park's whole life carbon footprint.

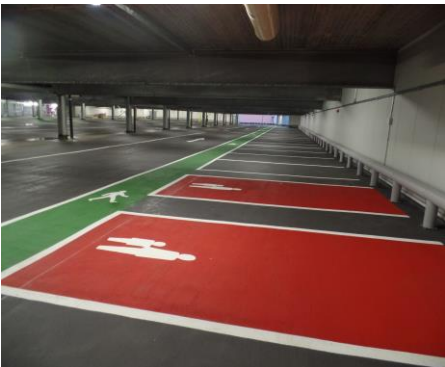
The Works

To provide an attractive, user-friendly car park with improved safety a vibrant colour scheme designed.



SL Construction Services installed **66 LM** of **Expansion Joint** and reinstated a secondary seal below the new seal.

The last operation was to apply all white lining



SL Construction Services selected the **Decseal** (methale methacrelate system) from **Polychem Ltd** based on its ability to be installed in sub zero temperatures with minimal disruption associated to the affect if weather and its solid track record spanning 15 years which provides long term performance.



Completion

Co-ordination of works were planned around other trades with good on site management and a direct skilled workforce from **SL Construction Services** providing flexible and assured safety and quality at every stage of the project.

The project has been completed ahead of time and on budget.